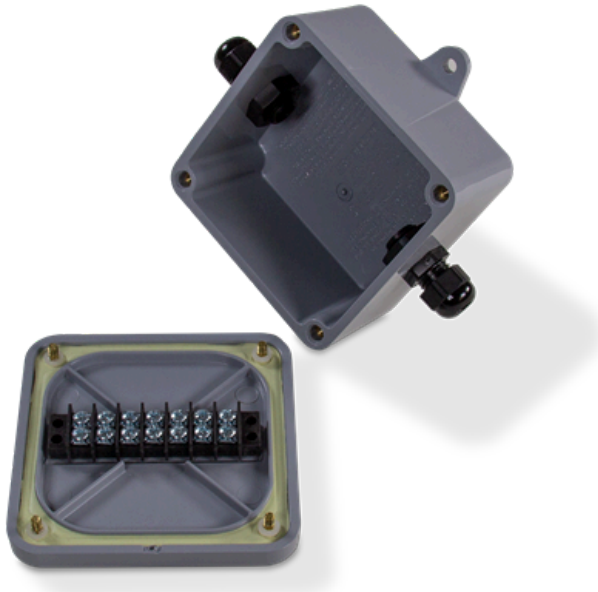


EL168 1-Cell Junction Splice Box

RICE LAKE
WEIGHING SYSTEMS

As of: Thursday, October 31, 2024



Standard Features

- Non-metallic PVC enclosure with separate input and output cable fittings
- No soldering, compression or swaged fittings are required

Applications

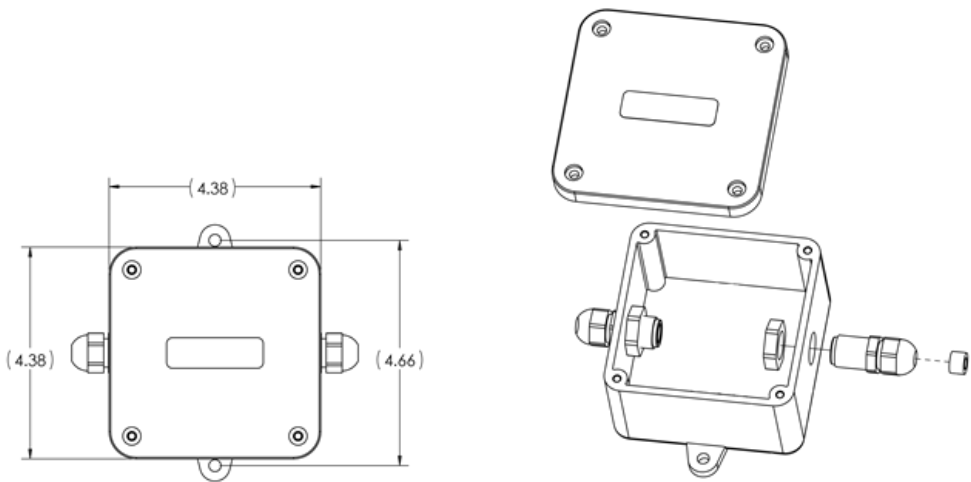
- For splicing or extending load cell cable

Use the EL168 1-Cell junction box for splicing or extending load cell cable. The PVC enclosure contains separate input and output cable fittings and no soldering, compression or swagged fittings are required.

EL168 1-Cell Junction Box Specifications

Dimensions: (L × W × H) 4.0 × 4.0 × 2.5 in	Cable Fittings: Nylon waterproof strain-relief type	Terminal Block: Rated 300 V/15 A; seven-position, screw terminal can each accommodate up to #16 AWG
Temperature: Operating: 0 °F to 122 °F (-18 °C to 50 °C)	Cable Diameter: 0.079 to 0.314 in (2 to 8 mm)	Warranty: One-year limited

EL168 1-Cell Junction Box Dimensions



Parts

Part #	Description
21161	J-Box,Splice Single Cell FRP NEMA 4X

www.ricelake.com | 800-472-6703

An ISO 9001 Registered Company ©2024 Rice Lake Weighing Systems